

# S2OSB总部和会议厅

## S2OSB Headquarters & Conference Hall

事务所：BINAA – Building Innovation Arts Architecture

首席建筑师：Burak Pekoglu

设计团队：Burcu Kara (建筑师),

Ecenur Yavuz (建筑师),

Yavuz Selim Can (沟通设计师)

地点：Hendek, Sakarya / Turkey

摄影师：Thomas Mayer

S2OSB项目位于土耳其的腹地，伊斯坦布尔东面约170km的萨卡里亚地区，它是一栋具有首创性的管理建筑、公司总部和会议厅，项目的委托方是萨卡里亚第二工业区的CEO董事会。项目整合了企业的管理和工程团队的设计构想，成为当地的地标性建筑，给人们带来了一种新的外观感受。

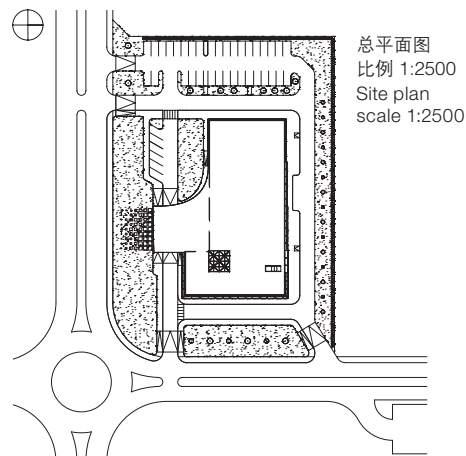
这种新型外观催生了一种全新的认知方式，因为它可以反映工业发展的核心概念。这个全新的意想不到的存在使该地区具有了独特的个性，并引起人们思考：这样的结构是如何产生的？背后的故事是什么？幕后有着怎样的合作？

建筑立面是引发这些问题的关键。立面体现了室内与室外的相互联系；它连接了室内与室外两个不同的世界。外围护结构体现了建筑如何表现和传达自己，如同一款服饰在做一项时尚宣言：这就是建筑

的性格。S2OSB项目的立面在表现出建筑特点的同时也体现了建筑的功能。

由精心制作的金属打造的立面包裹着建筑，有助于实现结构的多方面用途：从总部到会议厅（170个座位）。在会议厅，几何纹理的外壳开始于几乎全实心板材，紧贴着的还有穿孔板，直到它们分离为双层立面，可以过滤照射进办公室的日光。室内对室外来说是隐蔽的，而从室内看外面则是一览无遗。太阳的东升西落不断影响着外立面经过阳极氧化、抛光、折叠和精确设计的金属板的外观。夜晚，灯光设计重申了建筑的双重目的：在实体的外墙上，照明被诠释为按照韵律分布的穿孔板材，到办公室位置则变成了全部穿孔，办公室的室内照明表现出立面图案交替变化的感觉。因此，建筑立面充满了活力，以巧妙的方式展现了建筑的目的。

室内有两个独立的门厅：一个服务于



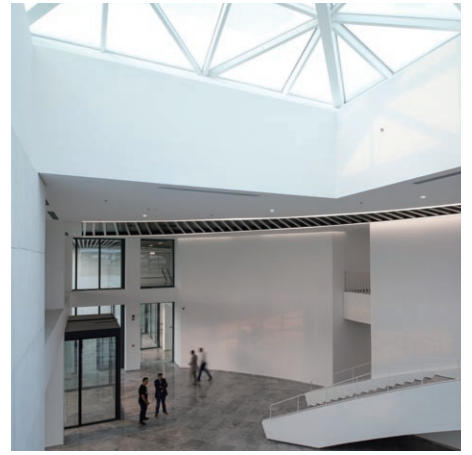
办公室，另一个服务于礼堂。超大雨篷让人们可以从两侧进入，提供了一个半封闭的空间，适合大型活动或节目。会议厅室内安装着实心板材：内部壳体由经过隔声设计的、几何形状的层压木板制成。天然石材与木材在室内营造出温暖的气氛，与冰冷的金属外立面形成对比。

办公室专为负责工业区及其共用设施的管理人员和工程师而设计。该建筑服务于工业综合体，满足其日常需求，但也具有公共用途，欢迎世界各地的听众来到这里的会议厅，参与知识交流。

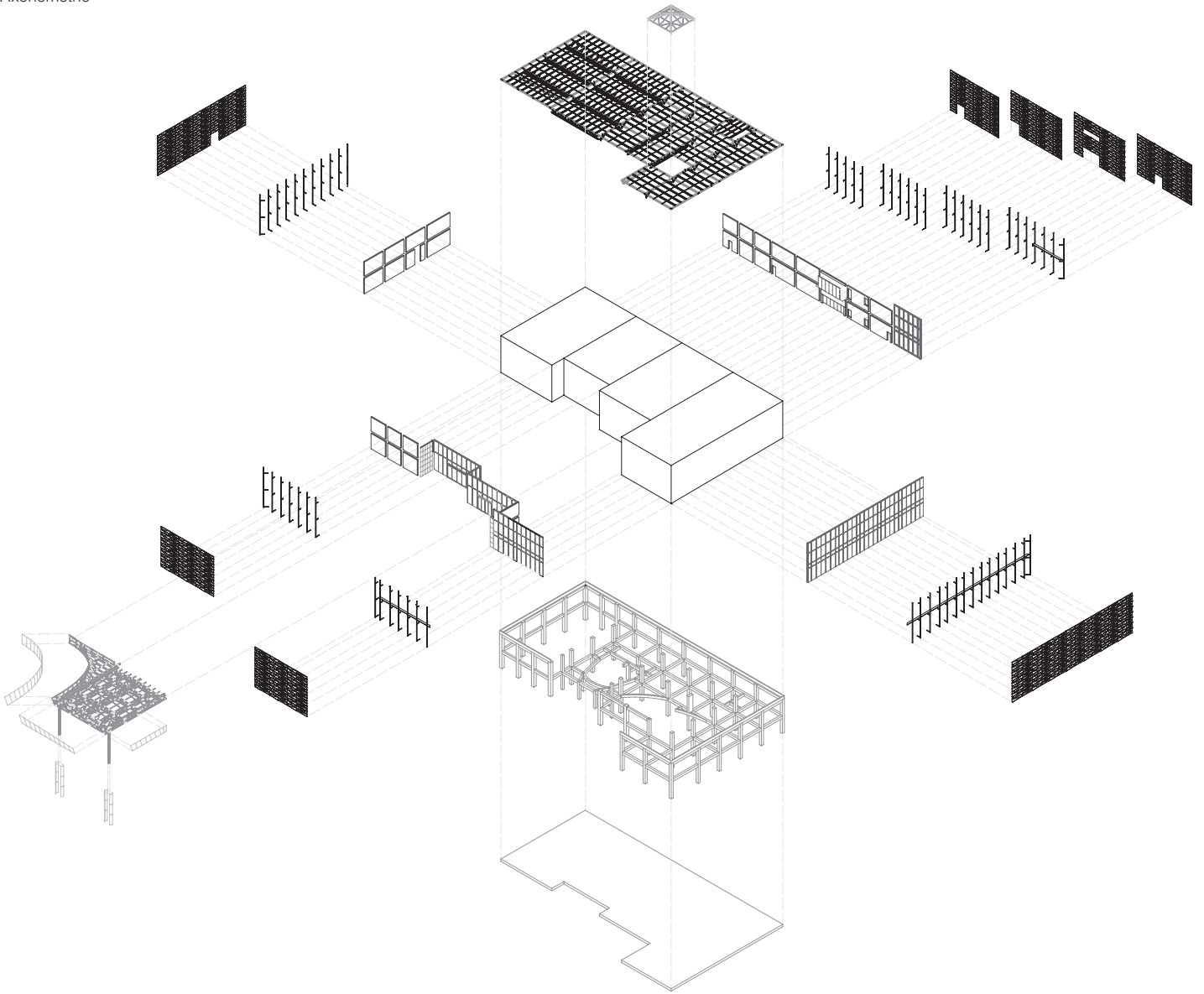
该建筑的使命是实现不同工业和不同人群的融合。这样的融合，一方面打开了人们的思维，让人们可以挖掘不同工业的潜能，另一方面也体现了设计与建筑在实现土耳其腹地潜力的初期过程里所扮演的重要角色。

蒋丽 译





轴测图  
Axonometric

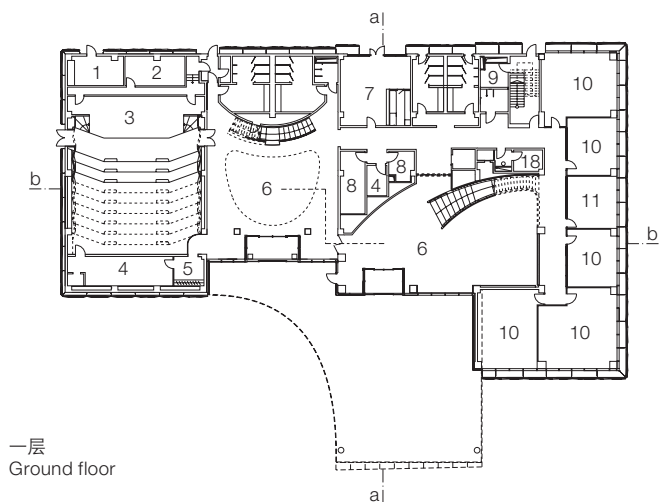


剖面图  
比例不详  
楼层平面图  
比例不详

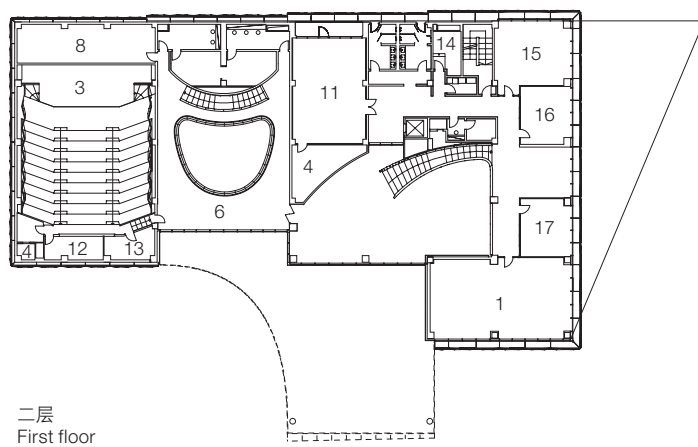
- |       |         |          |
|-------|---------|----------|
| 1 休息室 | 7 社交空间  | 13 翻译室   |
| 2 后台  | 8 档案室   | 14 服务器机房 |
| 3 会议厅 | 9 电气控制室 | 15 经理室   |
| 4 储存室 | 10 办公室  | 16 会计室   |
| 5 衣帽间 | 11 会议室  | 17 法务室   |
| 6 门厅  | 12 控制室  | 18 管理室   |

Section  
scale  
Floor plans  
scale

- |                   |                           |                    |
|-------------------|---------------------------|--------------------|
| 1 Rest room       | 8 Archive                 | 14 Server room     |
| 2 Backstage       | 9 Electrical control room | 15 Manager room    |
| 3 Conference hall | 10 Office                 | 16 Accounting      |
| 4 Storage         | 11 Meeting room           | 17 Law office      |
| 5 Cloakroom       | 12 Control room           | 18 Management room |
| 6 Foyer           | 13 Translator room        |                    |
| 7 Social Domain   |                           |                    |



一层  
Ground floor



二层  
First floor



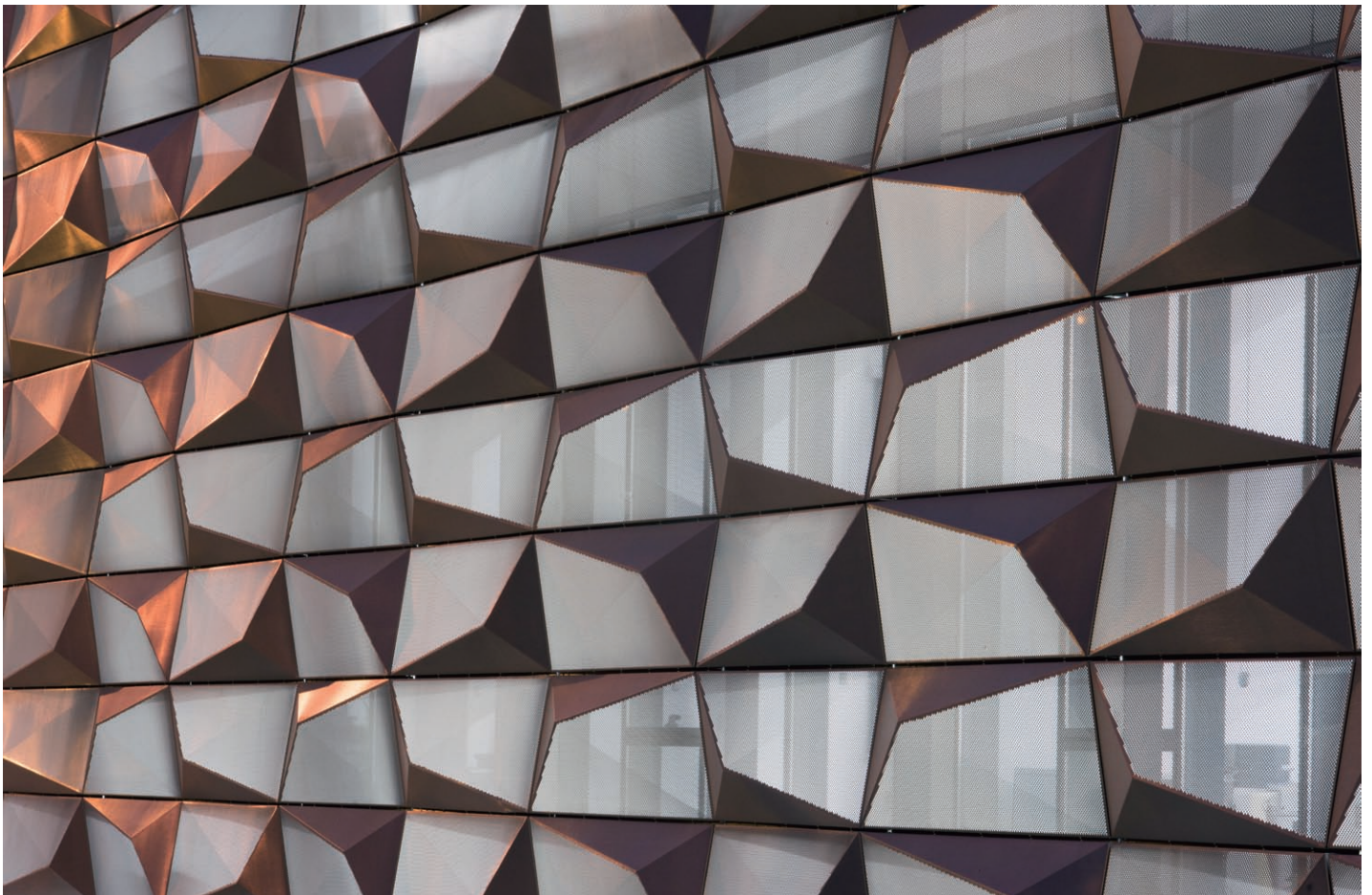


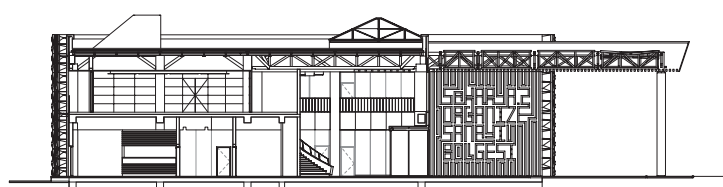
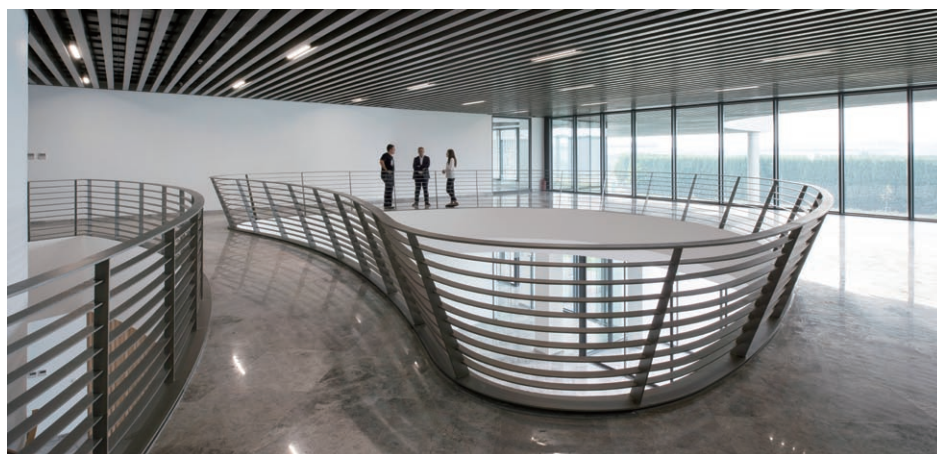
Situated in the Sakarya region – some 170 km east of Istanbul, in Turkey's Hinterland kilometres S2OSB is a pioneering management building, headquarters and conference hall, of the client, Sakarya 2nd Industrial District's Board of CEO's. Uniting the vision of their management and engineering teams, it is also an iconic structure in the area, engaging people into a new way of looking. A new way of looking leads to a new way of knowing as it can reflect the core concept of industrial development. A new and unexpected presence creates a unique character for the area and provokes people's thinking: they become curious about

the end product: How did this structure come about? What is the story behind it? What collaboration took place behind the scenes?

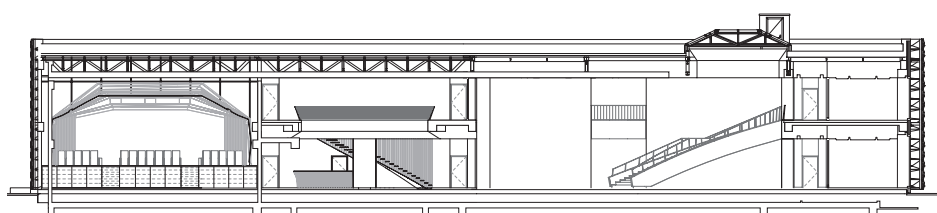
The facade is very important in triggering these questions. The facade is the interplay between exterior and interior; it opens one world into another. The envelope is how a building performs, how it expresses itself, similarly to how a garment makes a fashion statement: it is the building's character. S2OSB's facade expresses not only the building's character but also its function. The facade, made of thoughtfully crafted metal, wraps around the building and helps communicate the structure's multi-

faceted purpose: from head offices to the conference hall (170 seats). At the conference hall, the geometrically textured shell starts with mostly solid panels followed by perforated panels, increasing rhythmically until they detach as a double facade that filters controlled daylight to the offices. The interior is camouflaged by the exterior whereas the users can see outside. Daylight continuously changes the look of the anodized, satinated, folded, and mathematically orchestrated metal exterior. At night, the lighting design reiterates a dual purpose: at the solid facades, lighting is integrated into rhythmically distributed perforated panels, which then gets





aa



bb

fully perforated at the offices where the internal lighting expresses an alternative perception of the facades' pattern. Thus, the facade of the building is dynamic and expressive of the building's purpose in an artful way.

The interior consists of two separate foyers: one serves the offices and the other the auditorium. The grand canopy allows access on both sides, which provides a semi-enclosed space for larger activities or programs. The conference hall fits inside the solid panels: the inner shell is made of acoustically engineered, geometric, laminated wood panels. The natural stone and wood create a warm atmosphere inside, in contrast to the cold metal exterior. The offices are designed specifically for executives and engineers who are in charge of the industrial district and its shared facilities. The building serves the day-to-day needs of the industrial complex but also becomes a bridge to public use by inviting a global audience to its conference hall, for the exchange of knowledge. The building's mission is the convergence of various industries and people. Such convergence, on the one hand, opens people's minds to the great potential that industries hold, and on the other hand, shows the important role of design and architecture in beginning to realize that potential in Turkey's Hinterland.

